

**Bryant Course Evaluation  
Fall 2015**

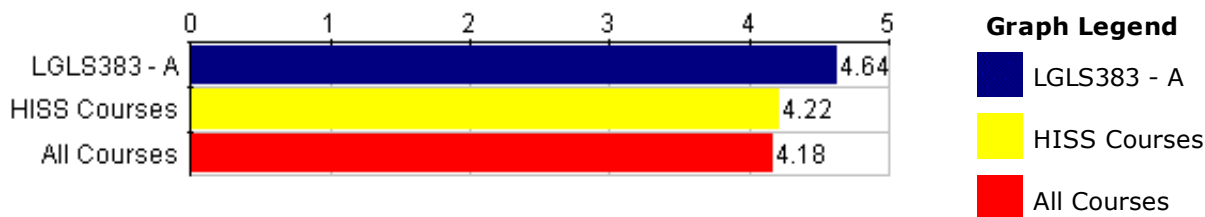
**Bryant University  
BU**

**Course:** LGLS383 A - Health Law

**Department:** HISS

**Responsible Faculty:** Andrea Boggio

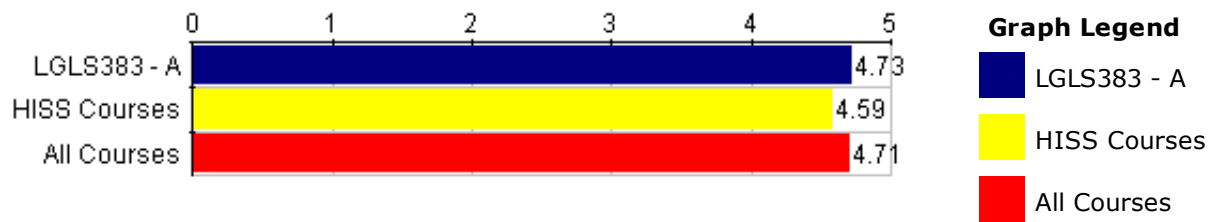
**Responses / Expected:** 11 / 12 (91.67%)



Course Questions	LGLS383 - A										--- Survey Comparisons ---					
	Responses					Course					HISS			All		
	1SD	2D	3N	4A	5SA	N	Mean	Med.	Mode	Std Dev	N	Mean	Pct Rnk	N	Mean	Pct Rnk
Q1 I have become more competent in this area due to this course.	0	0	1	2	8	11	4.64	5	5	.64	1.5K	4.22	85	13K	4.18	89

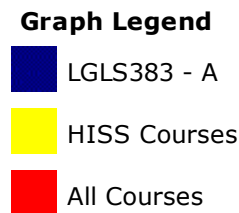
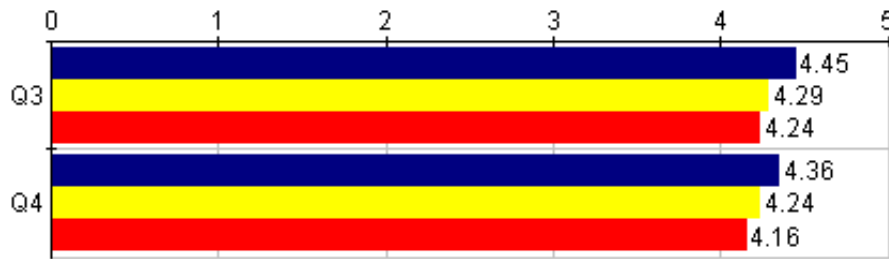
**Responses:** [1SD] 1. Strongly Disagree=1 [2D] 2. Disagree=2 [3N] 3. Neither=3 [4A] 4. Agree=4 [5SA] 5. Strongly Agree=5

**Pct Rnk:** Percentile Rank (100 is best, calculated vs. precise Mean)



Course Questions	LGLS383 - A					--- Survey Comparisons ---										
	Responses					Course					HISS			All		
	0	2	4	6	8	N	Mean	Med.	Mode	Std Dev	N	Mean	Pct Rnk	N	Mean	Pct Rnk
Q2 How are you doing in keeping up with assignments and readings – Percent complete:	0	0	1	1	9	11	4.73	5	5	.62	1.5K	4.59	58	13K	4.71	42

**Responses:** [0] 0-20%=1 [2] 21-40%=2 [4] 41-60%=3 [6] 61-80%=4 [8] 81-100%=5  
**Pct Rnk:** Percentile Rank (100 is best, calculated vs. precise Mean)



Course Questions	LGLS383 - A										--- Survey Comparisons ---					
	Responses					Course					HISS			All		
	1SD	2D	3N	4A	5SA	N	Mean	Med.	Mode	Std Dev	N	Mean	Pct Rnk	N	Mean	Pct Rnk
Q3 I have increased my overall knowledge of the subject matter.	0	0	1	4	6	11	4.45	5	5	.66	1.4K	4.29	61	13K	4.24	68
Q4 I feel challenged intellectually by this course.	0	0	1	5	5	11	4.36	4	4,5	.64	1.5K	4.24	56	13K	4.16	68

**Responses:** [1SD] 1. Strongly Disagree=1 [2D] 2. Disagree=2 [3N] 3. Neither=3 [4A] 4. Agree=4 [5SA] 5. Strongly Agree=5

**Pct Rnk:** Percentile Rank (100 is best, calculated vs. precise Mean)

**Q5 - What are your comments regarding the course design and content?**

**Response Rate: 81.82%** (9 of 11)

- The course is set up well
- current topics are discussed and are interesting
- Loved this course. Probably the most interesting course I have taken at Bryant. I appreciated its relevance and practicality and applying it to real world. Professor really taught in a good way to get to the issues and explain them in an understandable way.
- Very well structured. Topics and content were extremely interesting and related to current events.
- I liked the small class size setting because it promoted discussion. Was a very good class.
- Loved the content we went over, however the course design was scattered. Assignments seemed vague and test questions were worded weird.
- i thought that it was good
- I like the different topics discussed in this course.
- I like the design of this class mostly because the topics are relatable to modern events. Some of the topics were a little confusing but for the most part the material was not too difficult to grasp and the topics were very fun to learn about.

**Q6 - Which aspects of the course (including tests, lectures, assignments, etc.) did you find most useful?**

**Response Rate: 90.91%** (10 of 11)

- class discussion

- The lectures help the most
- lectures

Reading Group assignments were relatively easy and helped you synthesize material that we read about. Also appreciated very much not having to buy a book because the topics of health law are so recent and

- relevant to today's world. This not only saved money but the professor was logical in not forcing us to buy and book and doing the research himself to find articles that were pertinent to the topics. Quizzes and tests were easy if you study and took notes and put in the work.
- I found the lectures to be the most useful.
- I found the lectures and the reading group assignments most useful.
- reading cases related to current topic; i like the content we reviewed, it was interesting.
- the assignments where we have the group discussions during class
- I found the reading group assignments very helpful.
- I found the short answer quizzes to be most useful. The lectures were very helpful too because it allowed the class to share different ideas and learn from one another.

### Q7 - What (if anything) could be done to improve this course?

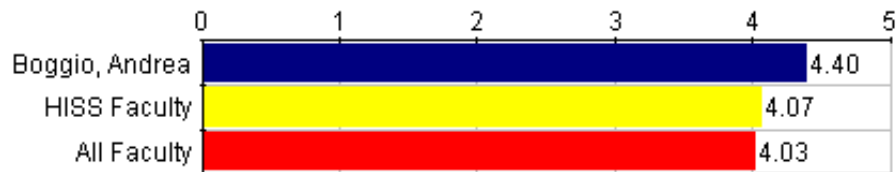
**Response Rate: 81.82% (9 of 11)**

- study guides
- Have a writing essay in the class

Get more class discussion going to make discussions more interesting. Also include notes on topics on blackboard prior to class discussion to highlight key points (these notes were extremely helpful to study for tests but they would be beneficial before class as well)

Promote more class discussion, by maybe designating a "subject matter expert" each day on a particular topics. Maybe class debates or simulations of a court trial. Also, case briefs could help our comfort with legal terminology and language.

- N/A
- more structured classroom setting with easy-to-read notes
- nothing
- Giving more detailed study guides would be EXTREMELY helpful for preparing for tests/quizzes because it felt like there was no guidance for preparation and studying.
- I don't think anything. I like the layout of the class with lectures, quizzes, tests the way it is laid out.

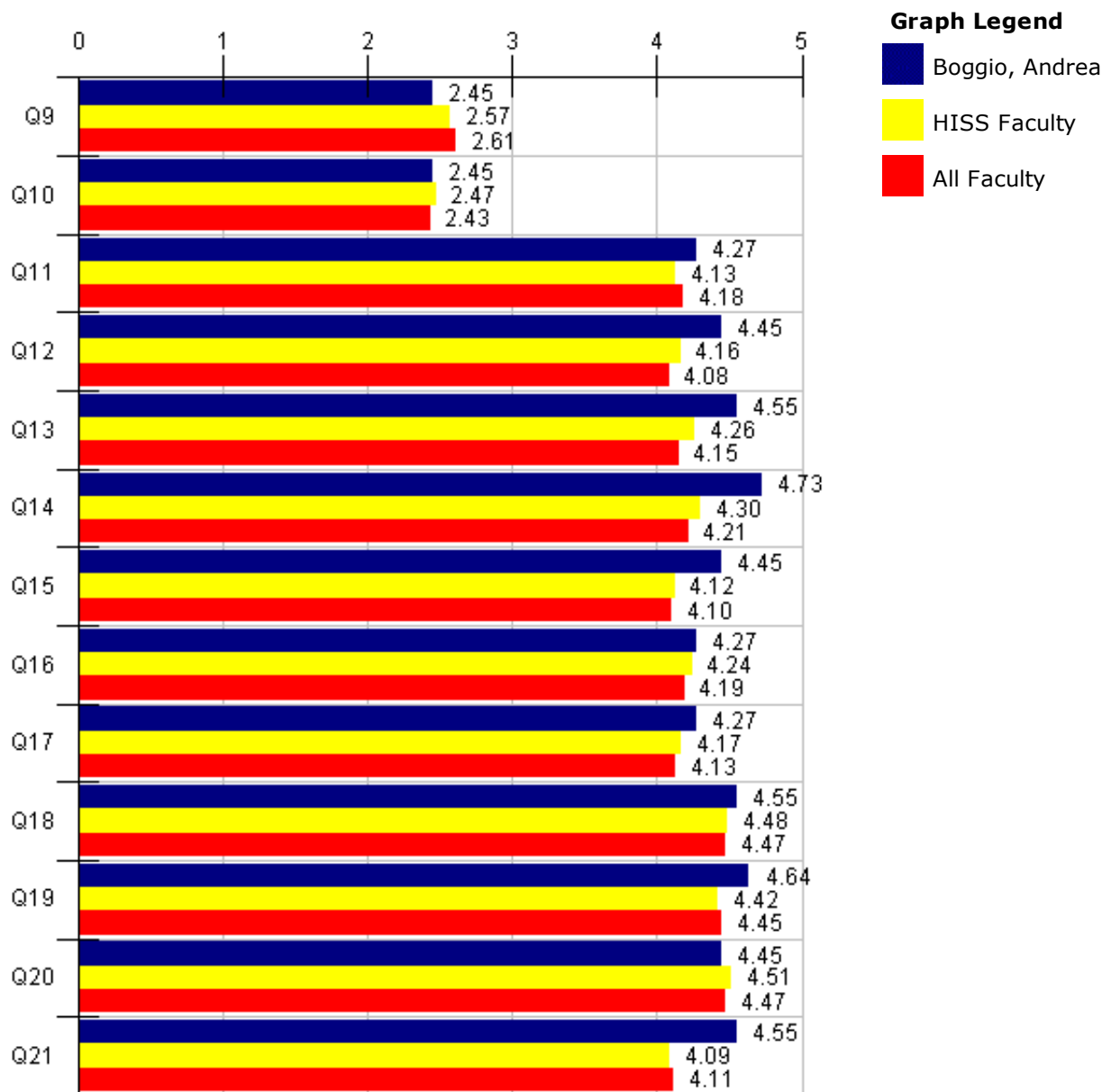


**Graph Legend**

- Boggio, Andrea
- HISS Faculty
- All Faculty

Instuctor Questions	Boggio, Andrea										--- Survey Comparisons ---					
	Responses					Individual					HISS			All		
	P	F	G	VG	E	N	Mean	Med.	Mode	Std Dev	N	Mean	Pct Rnk	N	Mean	Pct Rnk
<b>Q8</b> Rate the instructor's teaching ability in this class	0	0	2	2	6	10	4.40	5	5	.80	1.4K	4.07	59	13K	4.03	65

**Responses:** [P] Poor=1 [F] Fair=2 [G] Good=3 [VG] Very Good=4 [E] Excellent=5  
**Pct Rnk:** Percentile Rank (100 is best, calculated vs. precise Mean)



Instructor Questions	Boggio, Andrea										--- Survey Comparisons ---					
	Responses					Individual					HISS			All		
	1SD	2D	3N	4A	5SA	N	Mean	Med.	Mode	Std Dev	N	Mean	Pct Rnk	N	Mean	Pct Rnk
<b>Q9</b> The instructor presents the material too rapidly.	1	4	6	0	0	11	2.45	3	3	.66	1.5K	2.57	47	13K	2.61	43
<b>Q10</b> The instructor gives assignments that are too difficult.	2	2	7	0	0	11	2.45	3	3	.78	1.5K	2.47	54	13K	2.43	58
<b>Q11</b> The instructor is available to provide extra	0	0	1	6	4	11	4.27	4	4	.62	1.4K	4.13	60	13K	4.18	56

	help.																
<b>Q12</b>	The instructor provides clear answers to the student questions.	0	0	1	4	6	<b>11</b>	<b>4.45</b>	5	5	.66	<b>1.5K</b>	<b>4.16</b>	71	<b>13K</b>	<b>4.08</b>	71
<b>Q13</b>	The instructor encourages class discussion.	0	0	1	3	7	<b>11</b>	<b>4.55</b>	5	5	.66	<b>1.4K</b>	<b>4.26</b>	60	<b>13K</b>	<b>4.15</b>	66
<b>Q14</b>	The instructor brings current ideas to the classroom.	0	0	1	1	9	<b>11</b>	<b>4.73</b>	5	5	.62	<b>1.4K</b>	<b>4.30</b>	73	<b>13K</b>	<b>4.21</b>	84
<b>Q15</b>	The instructor has the course well organized.	0	0	1	4	6	<b>11</b>	<b>4.45</b>	5	5	.66	<b>1.4K</b>	<b>4.12</b>	71	<b>13K</b>	<b>4.10</b>	69
<b>Q16</b>	The instructor summarizes main points and provides emphasis on material.	0	1	1	3	6	<b>11</b>	<b>4.27</b>	5	5	.96	<b>1.4K</b>	<b>4.24</b>	47	<b>13K</b>	<b>4.19</b>	50
<b>Q17</b>	The instructor relates course concepts in systematic fashion	0	0	2	4	5	<b>11</b>	<b>4.27</b>	4	5	.75	<b>1.4K</b>	<b>4.17</b>	53	<b>13K</b>	<b>4.13</b>	57
<b>Q18</b>	The instructor seems to enjoy teaching.	0	0	1	3	7	<b>11</b>	<b>4.55</b>	5	5	.66	<b>1.4K</b>	<b>4.48</b>	42	<b>13K</b>	<b>4.47</b>	47
<b>Q19</b>	The instructor is friendly and considerate to students.	0	0	1	2	8	<b>11</b>	<b>4.64</b>	5	5	.64	<b>1.4K</b>	<b>4.42</b>	54	<b>13K</b>	<b>4.45</b>	58
<b>Q20</b>	The instructor is enthusiastic about the course material.	0	0	1	4	6	<b>11</b>	<b>4.45</b>	5	5	.66	<b>1.4K</b>	<b>4.51</b>	37	<b>13K</b>	<b>4.47</b>	39
<b>Q21</b>	I would recommend taking another course with this instructor to a friend.	0	0	2	1	8	<b>11</b>	<b>4.55</b>	5	5	.78	<b>1.4K</b>	<b>4.09</b>	66	<b>13K</b>	<b>4.11</b>	69

**Responses:** [1SD] 1. Strongly Disagree=1 [2D] 2. Disagree=2 [3N] 3. Neither=3 [4A] 4. Agree=4 [5SA] 5. Strongly Agree=5

**Pct Rnk:** Percentile Rank (100 is best, calculated vs. precise Mean)







**Q22 - What are your comments regarding the instructor of the course?**

**Faculty:** Boggio, Andrea

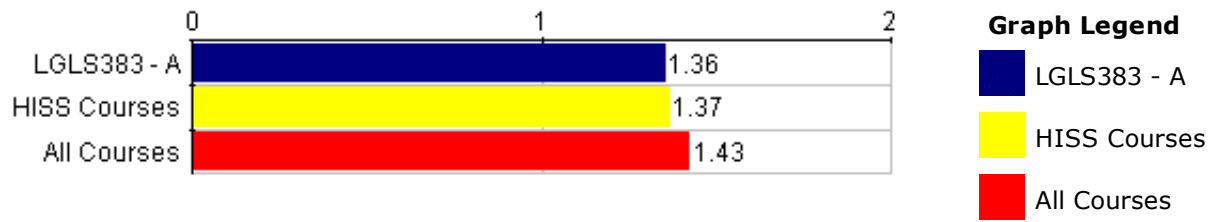
**Response Rate:** 63.64% (7 of 11)

- The course was good in the confrence room setting



- One of the best instructors I have had at Bryant. Friendly, easy to talk to, makes students enjoy the class, and practical. I wish all of my professors had it together like Boggio does. 
  - Great Professor, glad I had the chance to sit in on this course before graduation. 
  - Easily one of the best professors that I have had since coming to Bryant. Very knowledgeable and personable. I hate going to class and didn't mind sitting through this one. 
  - very nice, kept the class entertaining, but didn't explicitly state what we should focus on for exams 
- Professor Boggio is very friendly and is able to provide feedback and comments when needed. However,
- he assigns homework over the weekend that is due at the beginning of the week, which can be very frustrating when trying to collaborate with other group members. 
  - Pr. Boggio is very friendly and does a great job presenting the material. I enjoyed his class very much, and would not think twice to take him again. 

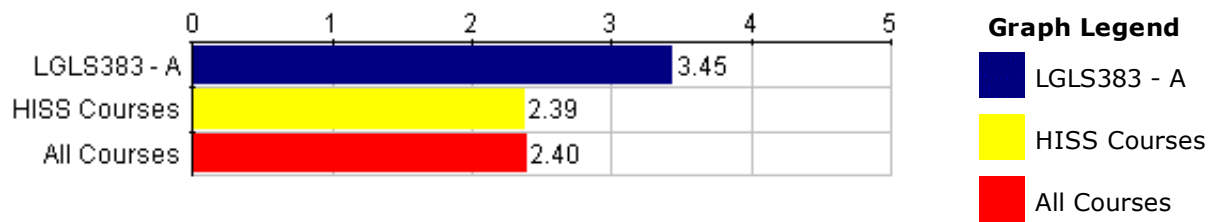




Student Demographics	LGLS383 - A							--- Survey Comparisons ---					
	Responses		Course					HISS			All		
	M	F	N	Mean	Med.	Mode	Std Dev	N	Mean	Pct Rnk	N	Mean	Pct Rnk
<b>Q23</b> You are:	7	4	<b>11</b>	<b>1.36</b>	1	1	.48	<b>1.5K</b>	<b>1.37</b>	46	<b>13K</b>	<b>1.43</b>	32

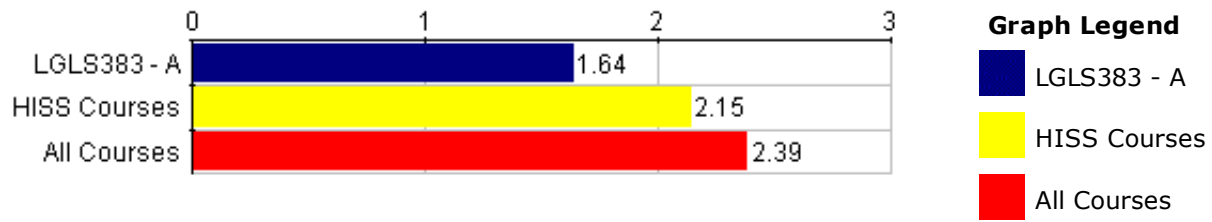
**Responses:** [M] Male=1 [F] Female=2

**Pct Rnk:** Percentile Rank (100 is best, calculated vs. precise Mean)



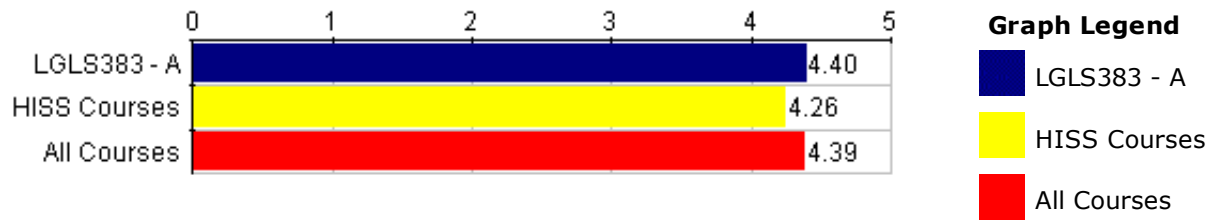
Student Demographics	LGLS383 - A										--- Survey Comparisons ---					
	Responses					Course					HISS			All		
	F	S	J	S	GS	N	Mean	Med.	Mode	Std Dev	N	Mean	Pct Rnk	N	Mean	Pct Rnk
<b>Q24</b> You are a:	0	0	6	5	0	<b>11</b>	<b>3.45</b>	3	3	.50	<b>1.4K</b>	<b>2.39</b>	82	<b>13K</b>	<b>2.40</b>	79

**Responses:** [F] Freshman=1 [S] Sophomore=2 [J] Junior=3 [S] Senior=4 [GS] Graduate Student=5  
**Pct Rnk:** Percentile Rank (100 is best, calculated vs. precise Mean)



Student Demographics	LGLS383 - A								--- Survey Comparisons ---					
	Responses				Course				HISS			All		
	RFC	RFM	E	N	Mean	Med.	Mode	Std Dev	N	Mean	Pct Rnk	N	Mean	Pct Rnk
<b>Q25</b> Is this course:	1	5	5	<b>11</b>	<b>1.64</b>	2	1,2	.64	<b>1.4K</b>	<b>2.15</b>	15	<b>13K</b>	<b>2.39</b>	9

**Responses:** [RFC] Required for Core=3 [RFM] Required for Major=2 [E] Elective=1  
**Pct Rnk:** Percentile Rank (100 is best, calculated vs. precise Mean)



Student Demographics	Responses					LGLS383 - A Course					--- Survey Comparisons ---					
	A	B	C	D	F	N	Mean	Med.	Mode	Std Dev	N	Mean	Pct Rnk	N	Mean	Pct Rnk
<b>Q26</b> Expected Grade:	4	6	0	0	0	<b>10</b>	<b>4.40</b>	4	4	.49	<b>1.5K</b>	<b>4.26</b>	62	<b>13K</b>	<b>4.39</b>	45

**Responses:** [A] A=5 [B] B=4 [C] C=3 [D] D=2 [F] F=1  
**Pct Rnk:** Percentile Rank (100 is best, calculated vs. precise Mean)